

Newsletter-36

Essential Documents for Site Services

To be positively circulated among the following personnel

1. Project personnel

2. Plant maintenance department heads

3. Engineering department

PHSPL gets a number of requests from various clients to carry out inspection of hangers and supports, to assess whether the hangers are functioning properly. Many of these plants are very old and hence even basic documentation regarding the supports are not available. Hence we thought it prudent to provide some guidelines regarding the documentation and other aspects related to hangers and supports for plant owners. Adhering to these guidelines would make the job of assessment of hangers and supports easy and more meaningful.

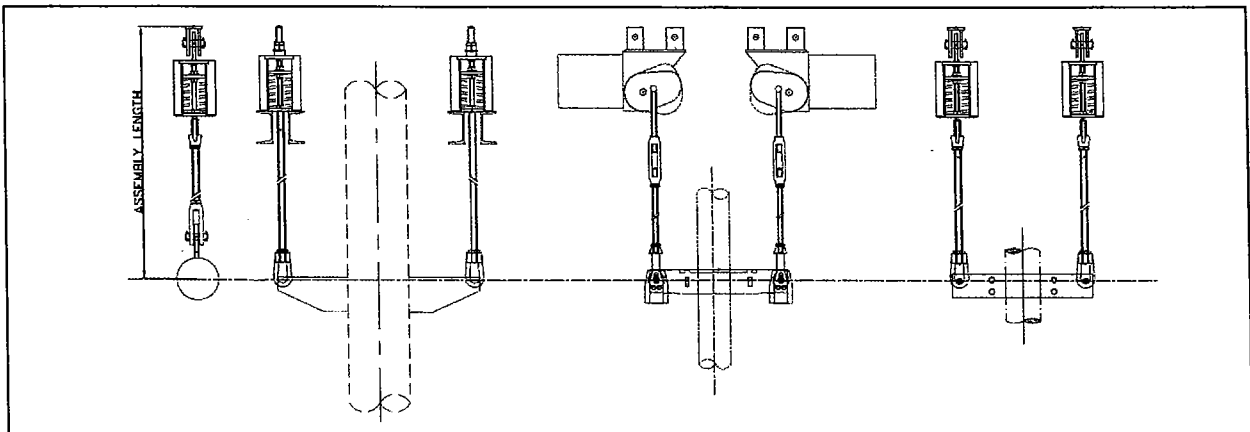
1. Preserve the documentation such as hanger GA drawings and erection manuals provided by the hanger supplier during initial supply for the entire life of the plant. This would be very useful in not only assessing the performance of the hangers, but also for reordering, in case they are to be replaced.
2. It is also essential to retain a copy of the isometric drawing of the piping system showing the location of the hangers. This is useful in checking whether the hanger tags have been erected in the correct location without any mix up
3. Please record the details of the hangers and supports in a hanger record sheet after the initial installation and also after every shut down. The suggested format of the record sheet is given in Figure 3 of MSS SP58. These are also to be preserved for the entire life of the plant.
4. The name plates of the spring hangers contain important information regarding the spring size and the supported load. It should be ensured that the name plates are not painted over, by mistake.

Pipe Hangers & Supports Private Limited

Information Req'd by Pipe Support Manufacturer



- 1) Hot Load (Operating Load) in Kgs : _____
- 2) Thermal Movement / Travel (Direction + or -) in mm : UP (+) mm
- 3) Type of Hanger Variable / Constant /Rigid : VariableEffort Support
- 4) For Constant Add Over Travel : Yes No
- 5) For Variable Springs Max Allowable % Load Variation : %
- 6) Horizontal / Lateral Movement (If any) : 'X' Dir mm / 'Z' Dir mm
- 7) Hydro Load (If any) : Kgs
- 8) Model & Type of Support : _____
- 9) Assembly Length (From BOS/TOS to Pipe CL) : mm
- 10) Operating Temperature : Deg C
- 11) Pipe Insulation Thk : mm
- 12) Pipe Material : _____
- 13) Require Pipe Shoe for Foot Mounted Support : Yes No
- 14) For Foot Mounted Support Match Height : Yes No
- 15) Attachments like Lugs, Cleats Welded to Pipe in Scope : Yes No
- 16) Operating Load includes Wt of Accessories like
Clamp, Tie Rods, Cleats, Lugs etc. : Yes No
- 17) Preferred Surface Protection / Painting : _____
- 18) For 'G' Type /Double / Trapeze type Hanger the
Load Given above is for 1 assembly consisting of
2 Hangers / Individual Hanger : Yes No
- 19) Hot load or Cold load Setting



For past newsletters please look up our website www.pipehangers.in

About Pipe Hangers:

A Global Solution to Spring Hangers and Supports

We are the leading manufacturer of spring hangers, supports & accessories. Over the past 40 years we have supplied to major power plants, refineries, nuclear installations & process industries in India & several International projects.